



OPERATOR MANUAL



■ For Indoor and Outdoor Commercial Use

▼ **Operator's Manual**
ENGLISH | 2-11

For service and support,
contact ByoPlanet® at
www.ServiceTechTeam.com



ByoPlanet.com

Table of Contents

SAFETY NOTICES	
Warnings	3
Safety Decal	4
Protective Gear	5
IMPORTANT SAFETY PRECAUTIONS	
Power Connection	5
Grounding Instructions	5
Extension Cord	5
Shock/Electrical Hazard	5
General Safety	6
Chemicals	6
SYSTEM COMPONENTS	
Backpack Assembly	7
Spray Wand Assembly	7
Harness Assembly	8
OPERATING INSTRUCTIONS	
Assembly Instructions	8
Preparing the Spray Area	9
Device Operation/Setup	9
Sprayer Operation During Sanitization and Disinfection	9
Changing ByoPlanet® Approved Products	9
MAINTENANCE	
Air Filter	10
Spray Wand Assembly	10
Backpack Assembly	10
SPECIFICATIONS	
10	
TROUBLESHOOTING	
11	
EQUIPMENT WARRANTY	
11	

SAFETY NOTICES

This manual contains information that is important for you to know and understand before operating the ByoPack® Electrostatic Sprayer System. This information relates to protecting your safety and ensures product reliability and performance. It is the owner's responsibility to ensure that all who operate this equipment read this manual.

WARNINGS

To help you recognize this information we use the warning symbols below. Please read the manual carefully, and pay special attention to the symbols and warning labels. Warning labels indicate a potentially hazardous situation which, if not avoided, could result in death or serious injury.

WARNINGS

- Read and fully understand the ByoPack® Electrostatic Sprayer System Operator's Manual prior to using the electrostatic sprayer.
- Read and fully understand the ByoPlanet-approved product labels prior to using any liquid product with the ByoPack® Electrostatic Sprayer System, and follow safe-use instructions such as recommend personal protective equipment (PPE).
- Electrostatic Sprayers produce significant electrostatic charge that improves spray coverage. Charge can accumulate on sprayed objects or the person conducting the spraying operations. Touching objects after building up charge may produce a shock or a spark from the discharge of the electrostatic charge, especially in low humidity environments. This electrostatic discharge may startle operators. Use caution when immediately touching objects that have been sprayed. Large objects subject to charge accumulation, such as vehicles, must be grounded. Operators should wear conductive footwear or use grounding straps.
- Never operate electrostatic sprayers in the presence of combustible liquids or vapors. Electrostatic charges can produce sparks that may ignite combustible liquids or vapors causing serious injury, death, or damage to property.
- The ByoPack® Electrostatic Sprayer System is for both indoor and outdoor commercial use. Bystanders and pets should not be in the area during application.
- The ByoPack® Electrostatic Sprayer System is intended for indoor storage only.
- The ByoPack Electrostatic Sprayer System should be stored and operated between 40° and 100° F (4.5° and 38° C). Storing or operating the device below 40° F (4.5° C) or above 100° F (38° C) may result in device damage.
- The ByoPack® Electrostatic Sprayer System should never be used in an area containing volatile chemicals. Nor should they be used in hazardous environments nor any area containing volatile or explosive levels of gas, vapor or airborne particles.
- The ByoPack® Electrostatic Sprayer System should never be used by untrained personnel.

WARNINGS

PRESSURIZED EQUIPMENT HAZARD

Fluid from equipment that leaks or ruptures from a component can splash in the eyes or on skin, causing serious injury. In order to help prevent a leak or rupture:



- Check hoses, tubes and couplings daily. Replace worn or damaged parts immediately.

WARNINGS

PLASTIC PARTS CLEANING SOLVENT HAZARD

Many solvents can degrade plastic parts and cause them to fail, which can lead to serious injury or property damage. In order to help prevent against degradation:



- Use only compatible water-based solvents to clean plastic structural pressure containing parts.
- See technical data in this and all other equipment instruction manuals. Read fluid and solvent manufacturer's Safety Data Sheets (SDS) and recommendations prior to use.

WARNINGS

FIRE, EXPLOSION AND ELECTRIC SHOCK HAZARD

Flammable fumes, such as solvent and paint fumes, in work areas can ignite or explode. To help prevent fire, explosion and electric shock:



- Electrostatic equipment must be used only by trained, qualified personnel who understand the requirements of this manual.
- Stop operation immediately if static sparking occurs or you feel shock. Do not use equipment until you identify and correct the problem.
- Use and clean equipment only in well-ventilated area.
- Never spray a flammable chemical (with a flashpoint less than 140°F [60°C]).
- Do not plug or unplug power cords or turn lights on or off when flammable fumes are present.
- Keep spray area free of debris, including solvents, rags, gasoline or any flammable chemicals.
- Keep a working fire extinguisher in the work area.

WARNINGS

PERSONAL PROTECTIVE EQUIPMENT

Wear appropriate protective equipment (PPE) when in the work area to help prevent serious injury.

- Refer to product-specific Safety Data Sheets (SDS) for any additional Personal Protective Equipment (PPE).

WARNINGS

EQUIPMENT MISUSE HAZARD

Misuse can cause serious injury or death.



- Do not operate the unit when fatigued or under the influence of drugs or alcohol.
- Use fluids and solvents that are compatible with equipment wetted parts. See technical data in all equipment manuals. Read fluid and solvent manufacturer's warnings. For complete information about your material, request SDS from distributor or retailer.
- Do not leave the work area while equipment is turned on.
- Turn off all equipment when not in use.
- Check equipment daily. Repair or replace worn or damaged parts immediately with genuine replacement parts from ByoPlanet®.
- Do not alter or modify equipment. Alterations or modifications void your ByoPack® Electrostatic Sprayer System warranty and agency approvals, and create safety hazards.
- Route hoses and power cords away from traffic areas, sharp edges, moving parts and hot surfaces.
- Do not stretch the cord tightly between the backpack and the outlet. A cord that is stretched or pulled may not function properly, can damage the cord or plug, and creates a tripping hazard.
- Hoses and power cords may be trip hazards. Avoid stepping or standing on any hoses and power cords. Watch your step.

WARNINGS

CHEMICAL USE HAZARD

Each chemical, such as a disinfectant, has a unique set of hazards and needs to be handled properly to ensure worker safety.

- The ByoPack® Electrostatic Sprayer System must only be used with products that have been approved by ByoPlanet®. Never spray any liquid product that is not a ByoPlanet®-approved product. The ByoPack® Electrostatic Sprayer System warranty is voided if the ByoPack® Electrostatic Sprayer System is used with products that are not approved by ByoPlanet®. Be aware that many chemical liquids can be harmful if they are not used properly.
- Read and understand the ByoPlanet®-approved product's SDS and label prior to use.
- Be aware of first-aid procedures related to the product in use.
- It is a violation of federal law to use a chemical in a manner inconsistent with its label.
- Use PPE as detailed by the ByoPlanet®-approved product's SDS.
- For use with non-flammable, non-combustible and non-volatile fluids only. Never spray a flammable chemical (flash point less than 140°F [60°C]). All ByoPlanet® chemistry conforms to this specification.
- Ensure the area being sprayed has proper ventilation.
- Bystanders and pets should not be in the area during application.
- Store all chemicals in a cool, dry place, away from heat and open flames.
- To dispose of ByoPlanet®-approved products refer to product labels.
- Never aim the sprayer at yourself, another person, or a pet.

Safety Decal

! WARNING!

- Always wear appropriate Personal Protective Equipment (PPE). Refer to Operator's Manual, product-specific ByoPlanet® Safety Data Sheets (SDS) or ByoPlanet.com for additional warnings and instructions.
- Follow instructions and precautions listed on ByoPlanet® manufacturing product labels.
- Only use ByoPlanet®-approved products through the ByoPack® Electrostatic Sprayer System.
- Inspect power cord, sprayer and external tubing for damage prior to use. DO NOT use if damage is present.
- Always use with a grounded electrical plug and outlet.
- Use device only as intended. Direct spray only toward appropriate surfaces.
- For outside or wet environment application, use a GFCI (ground fault circuit interrupter) inline adapter or outlet to help avoid risk of electrical shock. GFCI should be placed as close to outlet as possible.

! ¡ADVERTENCIA!

- Utilice siempre el Equipo de Protección Personal (EPP) adecuado. Consulte el Manual de Operador, las Fichas de Datos de Seguridad (FDS) de ByoPlanet® específicas del producto o el sitio ByoPlanet.com para las advertencias e instrucciones.
- Siga las instrucciones y precauciones que se listan en las etiquetas de fabricación del producto ByoPlanet®.
- Utilice solamente productos ByoPlanet® aprobados por el Atomizador ByoPack® de ByoPlanet®.
- Antes de usarlo inspeccione el cable de electricidad, el rociador y la tubería externa por daños. NO lo use si hay daños presentes.
- Siempre usarlo con un enchufe y toma de corriente eléctrica con conexión a tierra.
- Solamente utilice el dispositivo para lo que fue diseñado. Solo rocíe directamente en las superficies adecuadas.
- Para aplicaciones en exteriores o en ambientes húmedos, use un adaptador en línea GFCI (interruptor de circuito por falla a tierra) o tomacorriente para ayudar a evitar el riesgo de descarga eléctrica. El GFCI debe colocarse lo más cerca posible del tomacorriente.

! AVERTISSEMENTS!

- Toujours porter un équipement de protection personnelle (EPP) adéquat. Pour des mises en garde et des instructions supplémentaires, consulter le manuel de l'opérateur du pulvérisateur, la fiche signalétique du produit ByoPlanet® ou le site ByoPlanet.com.
- Suivre les instructions et les mises en garde indiquées sur l'étiquette d'origine de chaque produit ByoPlanet®.
- Utiliser le pulvérisateur ByoPack® Electrostatic Sprayer System uniquement avec les produits ByoPlanet® approuvés à cette fin.
- Avant l'emploi, inspecter le cordon d'alimentation, l'appareil lui-même et les tubes externes pour vérifier l'absence de dommages. NE PAS utiliser le pulvérisateur en présence de dommages.
- Toujours brancher le pulvérisateur dans une prise de courant avec mise à la terre.
- Utiliser le pulvérisateur strictement selon le mode d'emploi. Toujours diriger le jet directement vers les surfaces à traiter.
- Afin de réduire le risque de choc électrique lorsque le pulvérisateur est employé à l'extérieur ou dans un environnement mouillé, utiliser un adaptateur en ligne ou une prise avec disjoncteur de fuite à la terre (DDFT). Toujours placer l'adaptateur avec DDFT le plus près possible de la prise de courant.

Protective Gear

- PPE must comply with the American National Standards Institute's ANSI Z87.1-1989 standard if purchased after July 5, 1994, or ANSI Z87.1-1968 or with the standard of the country in use.
- Eye and face PPE shall be distinctly marked to facilitate identification of the manufacturer as indicated by OSHA standard (1910.133[a][4]).
- The following minimum requirements must be met by all protective devices. Protective devices shall:
 - Provide adequate protection against the particular hazards for which they are designed
 - Be of safe design and construction for the work to be performed
 - Be reasonably comfortable when worn under the designated conditions
 - Fit snugly and not unduly interfere with the movements of the wearer
 - Be durable
 - Be capable of being disinfected
 - Be easily cleanable
 - Be distinctly marked to facilitate identification only of the manufacturer

THE USE OF EYEWEAR PROTECTION IS RECOMMENDED WHEN USING THIS DEVICE.

ALWAYS USE APPROPRIATE PPE, LISTED ON THE BYOPLANET®-APPROVED PRODUCT'S SAFETY DATA SHEET (SDS).

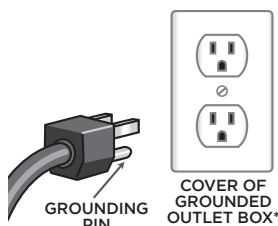
**BYOPLANET® SDSs CAN BE FOUND AT
WWW.BYOPLANET.COM.**

IMPORTANT SAFETY PRECAUTIONS

When using an electrical appliance, it is important to understand that some circuits are electrically live, even when the power switch is in the off position. Basic safety precautions should always be followed to reduce the risk of burns, fire, electrical shock, injury and/or death.

Power Connection

Power plug must be used with a three-pronged, grounded outlet, rated for no less than 15A service. Always verify before product use. Depending on specific model, this appliance is for use on a nominal 120V/60Hz circuit with a verified ground plug. Check with a qualified electrician to ensure you have the correct electrical service and grounding.



*120-volt grounded connectors shown. 220/240-volt grounded connectors will differ in shape.

Grounding Instructions

This appliance must be grounded. In the event of malfunction or breakdown, grounding provides a path of least resistance for an electric current to reduce the risk of electric shock. This appliance is equipped with a cord having an equipment-grounding conductor and a grounding plug. The plug must be plugged into an appropriate outlet that is properly installed and grounded in accordance with all local codes and ordinances. Do not use an adapter with this product except to provide ground fault circuit interrupter (GFCI) protection.

DANGER: Improper connection of the equipment-grounding conductor can result in a risk of electric shock. The conductor with insulation having an outer surface that is green, with or without yellow stripes, is the equipment-grounding conductor. If repair or replacement of the cord or plug is necessary, do not connect the equipment-grounding conductor to a live terminal. Check with a qualified electrician or serviceman if the grounding instructions are not completely understood or if in doubt as to whether the appliance is properly grounded. Do not modify the plug provided with the appliance — if it will not fit the outlet, have a proper outlet installed by a qualified electrician. Do not use an adapter with this product except to provide ground fault circuit interrupter (GFCI) protection.

Extension Cord

1. The unit is supplied with an extension cord. If the provided extension cord becomes damaged or if you wish to purchase additional extension cords or other replacement parts you may contact www.byoplanet.com for spare parts purchase.
2. ByoPlanet® recommends using a 16-gauge extension cord no longer than 100 feet (30.5m). Be aware that an undersized extension cord will cause a drop of in-line voltage, which could result in a loss of power, damage to the product and/or overheating. Always use a sufficiently rated extension cord.
3. Make sure your extension cord is in good condition. Inspect cords periodically and replace if damaged. A damaged cord can impact the unit's electrostatic performance or lead to injury.
4. For outside or wet environment application, use a GFCI (ground fault circuit interrupter) inline adapter or outlet to help avoid risk of electrical shock. GFCI should be placed as close to outlet as possible.

Shock/Electrical Hazard

As with most electrical appliances, electrical parts are electrically live even when the switch is off. To reduce the risk of burns, fire, electric shock or injury:

1. Use this unit only for its intended use, as described in this manual.
2. Do not use while bathing.
3. Do not place or store unit where it can fall or be placed in water or other liquid.
4. If unit falls into water, unplug immediately. Do not reach into water to retrieve.
5. Never operate this unit if the unit shows sign of physical damage, e.g., impact damage from a severe drop, or is working improperly. For technical support or spare parts purchase contact ByoPlanet® support at www.byoplanet.com.
6. Keep sprayer and cord away from heated surfaces.
7. Never block the air openings of the unit or place it on a soft surface (bed or couch), where the air openings may become blocked.
8. Never drop or insert any object into any opening on the sprayer.
9. Do not use with a damaged or broken extension cord.
10. Never use or store at a temperature above 100°F (38°C).

CAUTION: Electrostatic nozzle. Do not touch or insert any foreign object into the nozzle.

General Safety

Lack of attention to safety can result in reduced efficiency, accidents, personal injury or death. Watch for safety hazards and correct deficiencies promptly. Use the following safety precautions as a guide when using this machine:

1. Read the operator's manual. Failure to do so is considered misuse of the equipment.
2. Use the ByoPack® Electrostatic Sprayer System unit only for its intended use, as described in this manual.
3. Before operating equipment, become familiar with all caution and warning decals affixed to the equipment.
4. Do not use the ByoPack® Electrostatic Sprayer System in a hazardous location.
5. Only trained personnel familiar with the ByoPack® Electrostatic Sprayer System and ByoPlanet®-approved products should be allowed to operate.
6. Do not allow personnel to operate the sprayer without proper instruction or under the influence of alcohol or drugs.
7. Use an extension cord meeting or exceeding the specification detailed in the EXTENSION CORD section.
8. Store sprayer in a cool, dry place. Do not expose to extreme temperatures.
9. Purge liquid line before storing the unit.
10. Be aware, even when the sprayer is off, power is still supplied to the unit when plugged into an electrical outlet.
11. Never hang unit from cord.
12. A device should never be left unattended when plugged in.
13. Always turn off sprayer after each application and before unplugging.
14. Always unplug unit from outlet when not in use or when leaving it unattended.
15. Never unplug the unit by pulling the cord or with wet hands. Always unplug by grasping the plug.
16. Never pull or carry the sprayer by the power cord.
17. Do not crimp the cord or strain it around sharp edges. Doing so might damage the cord.
18. Do not use the ByoPack® Electrostatic Sprayer System with a damaged extension cord.
19. Always thoroughly inspect product before usage.
20. During normal operation, the spray wand and loom may become warm to the touch. If device becomes hot, turn off and allow device to sit for 30 minutes.
21. For questions or concerns about the ByoPack® Electrostatic Sprayer System, contact the ByoPlanet® Support Team at www.byoplanet.com.

Chemicals

The ByoPack® Electrostatic Sprayer System can only be used with products that have been approved by ByoPlanet®. The ByoPack Electrostatic Sprayer System warranty is voided if the ByoPack® Electrostatic Sprayer System is used with products that are not approved by ByoPlanet®. Be aware that many chemical liquids can be harmful if they are not used properly.

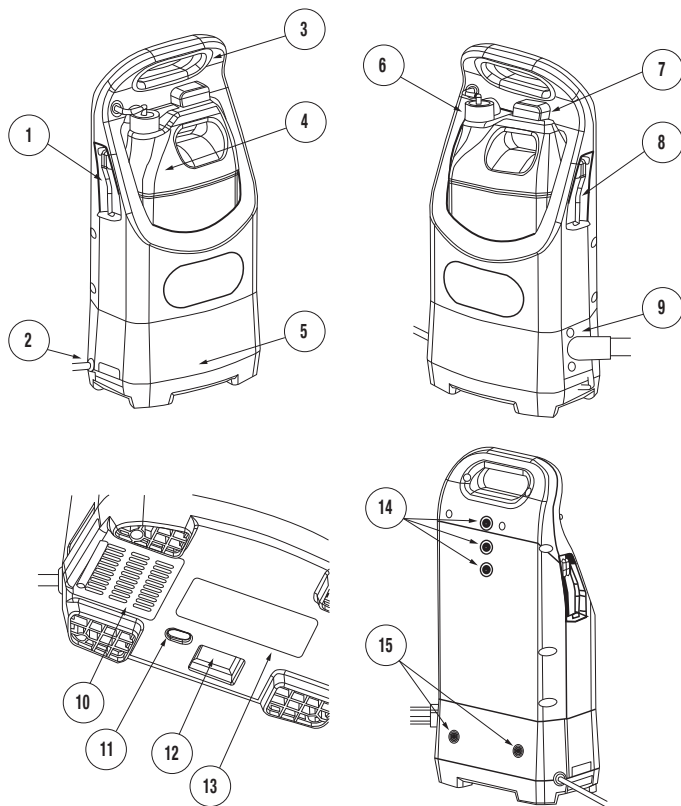
1. Always use appropriate PPE when operating the ByoPack® Electrostatic Sprayer System. Refer to product SDS for proper PPE.
2. Follow the liquid product label and SDS for proper storing, handling, and disposing of any liquid products used in the ByoPack® Electrostatic Sprayer System.
3. Know the length of time required by each liquid product application before allowing people and pets to return to the sprayed area.
4. Tampering with ByoPlanet®-approved products, product containers and the ByoPack® Electrostatic Sprayer System in any form will void the customer warranty.
5. To dispose of ByoPack®-approved products refer to product labels.
6. If liquid products come into contact with your skin or eyes, please refer to product label and SDS for first aid measures.
7. Never aim the sprayer at yourself, another person or a pet.
8. Do not mix chemicals unless specifically directed on the product SDS and label.

IMPORTANT: Safety data sheets (SDS) are available for all liquid products that have been approved for use in the ByoPack® Electrostatic Sprayer System. These SDSs will inform you of any hazards and precautions of which you should be aware. All employees that use the product must be aware of and have access to the SDS. They should also be trained for and aware of their safety while working with liquid products. It is the responsibility of the owner of the equipment to obtain an SDS from ByoPlanet® for each chemical used. Visit www.byoplanet.com for more information.

SYSTEM COMPONENTS

The patented ByoPack® Electrostatic Sprayer System was engineered with the end-user in mind. It is durable, highly mobile and effective for electrostatic delivery. The replaceable filter is the only serviceable component. If you are experiencing issues with your device, please contact ByoPlanet® support at www.byoplanet.com.

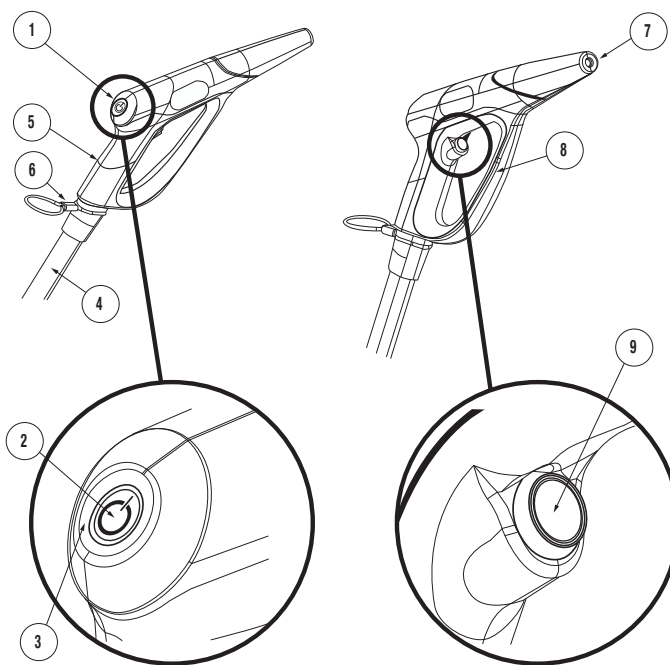
Backpack Assembly



1	Extension Cord Storage	Located on the left side of the backpack for extension cord storage using a Velcro® loop.
2	Power Cord Assembly	Power plug for unit.
3	Handle	Soft textured handle to ensure comfort and grip.
4	1-Gallon (3.8 Liters) Product Container	Contains ByoPlanet®-approved product (not included with equipment).
5	Backpack Electrical Compartment	Lower compartment containing all major electrical components.
6	Dispensing Cap and Tube	Replaces the cap for the product container when container is installed in backpack.
7	Container Release Button	Prevents container from falling out when tipped over. Press button to release container.
8	Spray Wand Storage	Located on the right side of the backpack. Stores the sprayer wand and hose.
9	Loom Connection Plate	Allows for removal of loom/sprayer assembly as well as access to fluid filter.
10	Replaceable Filter	Replaceable air filter to be replaced every 3 months or 300 operating hours.

11	Diagnostic Center	LED lights provide information to help customer service representatives more quickly and accurately diagnose issues.
12	Hour Meter	Logs running time of equipment to assure proper maintenance.
13	Model Information	ByoPack® Electrostatic Sprayer System Model No: P2-CBP515 (115V) P2-CBP530 (230V) Serial No: P2CBP115A00001 (115V) P2CBP230A00001 (230V)
14	Upper Mounting Points for Harness Assembly	Upper position points for mounting backpack harness. Adjustable depending on operator size. See harness assembly section of manual for instructions.
15	Lower Mounting Points for Harness Assembly	Lower position points for mounting backpack harness. See harness assembly section of manual for instructions.

Spray Wand Assembly



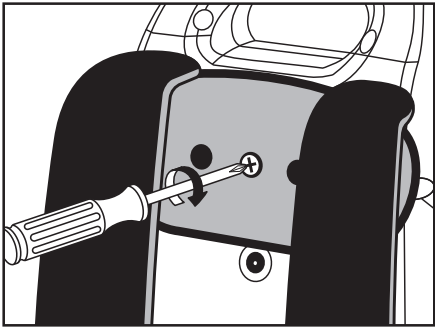
1	Main Control Panel	Indicates the power, sprayer, and electrostatics are on.
2	Main Power Button	Initiates power to the sprayer.
3	Electrostatics "On/Off" Illuminated Indicator	Indicates activation of electrostatics and spray.
4	Loom Assembly	Connects the electrical line, liquid line, and air line from the backpack to the spray wand.
5	Spray Wand Handle	Textured handle positioned for ambidextrous use.
6	Lanyard	Attachment point for clipping wand to backpack.
7	Nozzle Assembly	Located on the front of the sprayer.
8	Electrostatics Control Trigger Guard	Houses electrical components and protects trigger button.
9	Electrostatics and Spray Button	Initiates liquid spray.

Assembly Instructions

The backpack harness should be attached to the device prior to use.

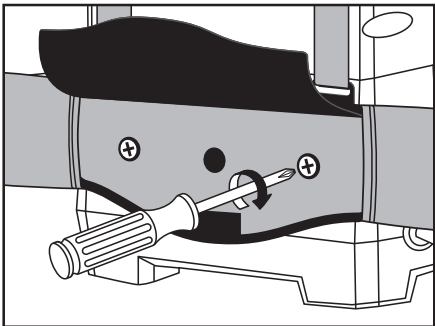
To adjust the backpack upper harness:

- 1. Adjust the upper harness by loosening the tensioning straps. Then using a Phillips screwdriver, thread the screw into one of the three adjustable upper harness locations. The upper pad should be secured once the screw is firmly tightened into position.

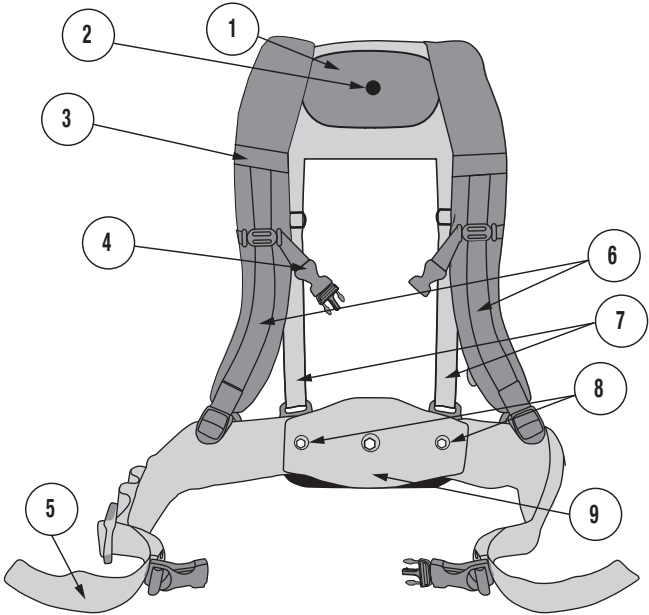


Note: The upper part of the harness should sit between the shoulder blades for proper fit. Taller users may need to move the position up. Shorter users may need to move the position down. **DO NOT** use any additionally assembly compounds such as Loctite™ or grease.

- 2. To attach the lower part of the harness, use a Philips screwdriver to thread the lower attachment bolts into the lower back plate.



NOTE: **DO NOT** use any additional assembly compounds such as Loctite™ or grease.



1	Upper Harness	Breathable padded back support for ventilation and comfort.
2	Upper Attachment Bolt	Secures upper harness to backpack unit. Can be adjusted to fit the operator.
3	Wand Attachment Clip	Clip for temporary spray wand storage.
4	Sternum Strap/Buckle	Strap to ensure even weight distribution.
5	Waist Strap/Buckle	Strap to ensure even weight distribution.
6	Shoulder Straps	Breathable padded mesh shoulder straps.
7	Tensioning Straps	Used to lengthen or shorten the backpack shoulder straps.
8	Lower Attachment Bolts (2)	Secures lower back plate to backpack.
9	Lower Back Plate	Breathable padded lower back support for ventilation and comfort.

Preparing the Spray Area

1. Clean gross filth by using standard manual cleaning protocols.
2. Close the room to the general public for cleaning. Place signs or warning indicators on doors that indicate no one should enter the room.
3. Power off any sensitive electrical devices. Devices do not need to be unplugged.

Unit Operation/Setup

1. Choose the appropriate ByoPlanet®-approved product.
2. Put on appropriate PPE. See section on PPE on page 5.
3. Mount desired ByoPlanet®-approved product on the backpack by sliding the container into the container reservoir. Ensure that the container is positioned facing up with the opening below the dispensing tube.
4. Unscrew the lid on the ByoPlanet®-approved product and connect the dispensing cap to the container. Be sure the cap is screwed all the way down; do not overtighten.
5. Unwrap supplied extension cord completely and plug ByoPack® Electrostatic Sprayer System into a grounded, three-pronged outlet. See EXTENSION CORD section for extension cord specifications.

NOTE: For outside or wet environment application, use a GFCI (ground fault circuit interrupter) inline adapter or outlet to help avoid risk of electrical shock. GFCI should be placed as close to outlet as possible.

6. Put on backpack and properly secure in place using safety straps. To properly secure the backpack:
 - Remove spray wand from spray wand storage hook and place wand onto the backpack shoulder strap using the wand attachment clip.
 - Loosen the shoulder straps and the waist belt. Lift the backpack and slide arms through the straps.
 - Connect the waist strap. Tighten the waist belt and ensure the weight of the unit is concentrated on your hips rather than shoulders.
If needed, use the upper mounting points to adjust attachment bolt using a Phillips screwdriver to ensure the weight of the unit is concentrated on your hips.
 - Connect the sternum straps.
 - Adjust the shoulder straps so that the unit fits comfortably, and the weight is still concentrated on your hips.
 - Slide the buckle up or down the strap for best fit.
7. Thread the extension cord through the strain relief on the waistbelt.

NOTE: Do not tie extension cord and power cord together. Doing so will result in damage and may void your warranty.

8. Remove wand from the wand attachment clip. With the wand firmly in hand, locate the main power switch on the sprayer wand. Press and release the main power button on wand to initiate power to the system. Main power button will illuminate blue.
9. **Priming the ByoPack® Electrostatic Sprayer System:**
Aim the nozzle into an inconspicuous corner, container or drain. Press and release the spray button on the wand to activate electrostatic spraying system and to spray solution. Electrostatic indicator ring on wand will illuminate blue. Spray until a steady flow of solution runs through the nozzle. Press and release the spray button on the wand to stop spraying.

NOTE: Sprayer will automatically stay on until spray button is depressed an additional time, or the main power button is pressed.

Sprayer Operation

1. Direct the spray wand at the desired surface.
2. Begin to spray. With the main power button already on, press the sprayer button once to initiate spraying. Press again to stop flow of the sprayer.
3. Follow a continuous path around the area working from high to low areas, moving the sprayer in a sweeping motion until surfaces are thoroughly wet. Optimal spray distance away from surfaces is 2-4 feet (0.6 – 1.2 meters).

NOTE: If using the wand holster for temporary storage, turn off the system by pressing the main power button prior to placing the wand into the holster.

4. After spraying, keep the area closed to the public until applicable bystander re-entry times are reached (see the product SDS for information on bystander re-entry times). If no re-entry time is indicated, keep the area closed until product contact times are reached or surfaces are visibly dry.
5. Remove the closed sign from the door.

Changing ByoPlanet®-Approved Products

1. Stop spraying the ByoPack® Electrostatic Sprayer System and take off the device.
2. Disconnect the dispensing cap from the ByoPlanet®-approved product that is to be changed.
3. Press the container release button and remove container from the sprayer. Cap the removed product if it is being stored.
4. **Purging the ByoPack® Electrostatic Sprayer System:**
With the main power already on, press spray button into an inconspicuous corner, container or drain. Spray the ByoPack® Electrostatic Sprayer System until no liquid comes out of the nozzle.
5. Choose the appropriate ByoPlanet®-approved product.
6. Mount desired ByoPlanet®-approved product on the backpack by sliding the container into the container reservoir. Ensure that the container is positioned with the opening facing up and the opening below the dispensing tube.
7. Unscrew the lid on the ByoPlanet® approved product of your choice and connect the dispensing cap to the container. Be sure the cap is screwed all the way down; do not overtighten.
8. **Priming the ByoPack® Electrostatic Sprayer System:**
With main power already on, depress trigger into an inconspicuous corner, container or drain. Spray the ByoPack® Electrostatic Sprayer System for up to 25 seconds to generate a steady flow of solution.

MAINTENANCE

In order for the ByoPack® Electrostatic Sprayer System to remain functional, the equipment should be cleaned on a regular basis. In addition to general cleaning of the unit, one user serviceable area — the air filter — must be maintained and serviced regularly.

NOTE: As the sprayer becomes dirty from typical use, a 70% isopropyl alcohol cleaner that is manually applied is recommended on outside surfaces.

Air Filter

Looking at the bottom of the backpack, locate the Replaceable Filter access panel (see SYSTEM COMPONENTS — BACKPACK ASSEMBLY). Open panel and remove filter from slot. Replace with OEM filter media, PN 600254. This filter must be replaced every three months or 300 operating hours. Operating hours are recorded on the on the Hour Meter (See SYSTEM COMPONENTS — BACKPACK ASSEMBLY). To purchase spare parts, visit www.byoplanet.com.

NOTE: One filter is included in the device with three additional filters for replacement.

Spray Wand Assembly

The spray wand assembly IS NOT field serviceable. Any attempt to disassemble the wand or to perform field service will void the warranty and likely damage the sprayer. Do not open the unit shell, as doing so will void the warranty on the sprayer. If you are experiencing issues with your spray wand assembly, please contact Customer Support at www.byoplanet.com. To clean the spray wand assembly of excess debris, manually apply 70% isopropyl alcohol to the exterior of the wand assembly using a cloth.

Backpack Assembly

The backpack assembly has no serviceable parts inside. Do not open the housing, as doing so will void the warranty on the sprayer. If you are experiencing issues with your backpack assembly, please contact Customer Support at www.byoplanet.com. To clean the backpack of excess debris, manually apply 70% isopropyl alcohol to the exterior of the backpack using a cloth.

SPECIFICATIONS for 110V Model

Volts	~115V
Running Amps	3.8A
Frequency	60Hz
Hose Length	5 ft. (1.52 m)
Dimensions	Backpack: 21.2 in x 12 in x 6.5 in (53.8 cm x 30.5 cm x 16.5 cm)
Weight - Empty	12 lbs (5.4 kg)
Weight - Full	21 lbs (9.5 kg)
Shipping Weight	23 lbs (10.4 kg)
Flow Rate	105-125 mL/min

SPECIFICATIONS for 230V Model

Volts	~230V
Running Amps	1.9A
Frequency	50Hz
Hose Length	5 ft. (1.52 m)
Dimensions	Backpack: 21.2 in x 12 in x 6.5 in (53.8 cm x 30.5 cm x 16.5 cm)
Weight - Empty	12 lbs (5.4 kg)
Weight - Full	21 lbs (9.5 kg)
Shipping Weight	23 lbs (10.4 kg)
Flow Rate	105-125 mL/min

TROUBLESHOOTING

NOTE: Do NOT use a chemical in the unit that is not a ByoPlanet® approved product. If you encounter the issues listed below, use the suggested troubleshooting methods. If you encounter an issue that is not addressed in this manual, contact ByoPlanet® support at www.byoplanet.com.

System will not turn on or has shut off suddenly

Potential Cause	Corrective Action
No Power	Verify the unit is plugged into a known working outlet. Verify that the system is in use with an operational extension cord which meets the specifications set forth in the user manual. Inspect the extension cord for damage. If the unit still refuses to start, the user should contact ByoPlanet® support. The device is equipped with a diagnostic center that is visible through a small window on the bottom of the unit to help ByoPlanet® support diagnose issues. The Green LED means the device is powered. The white LED means the signal is coming from the base. The blue LED means the signal is coming from the sprayer wand. If your device stops working, be sure to check the LED display to determine whether the base or wand is no longer properly functioning and contact ByoPlanet® support for device support and part replacement.
System is not switched on	Press main power button on back of wand. Main power button will illuminate.
Blower has overheated	Allow the unit to sit for a minimum of 30 minutes with the power off.

No spray, erratic spray, or weak spray

Potential Cause	Corrective Action
Out of liquid solution	Inspect product container for solution level and replace if empty.
Weak or erratic power supplied to system	Power the unit off, unplug from the wall and plug into a different electrical outlet. If another outlet is not available, look to see if other devices are running on the same electrical circuit. Power those off if necessary. This could also be the result of an underrated extension cord. See the EXTENSION CORD section for additional details.
Damage to loom assembly	Inspect loom assembly for escaping air or fluid. If found, contact ByoPlanet®'s Support replacement.
Dispensing cap is not properly attached to the container	Prior to screwing on dispensing cap, ensure no foil, dirt or debris is in the container threads. Ensure container connection is properly threaded and hand tight.
Bubbles in liquid line or end of container	Aim the nozzle into an inconspicuous corner, container or drain. Press and release the spray button on the wand to activate electrostatic spraying system and to spray solution. Electrostatic indicator ring on wand will illuminate blue. Spray until a steady flow of solution runs through

Bubbles in liquid line or end of container continued

the nozzle. This may take up to 35 seconds when beginning a new container or starting for the first time. If small bubbles are visible in the dispensing tube, hold spray wand below the backpack unit for priming or wait up to 5 minutes for bubbles to dissipate. If consistent flow is not achieved, re-attach dispensing cap to ensure it is properly threaded.

Airflow seems low or weak

Potential Cause	Corrective Action
Kink in loom assembly	Check to ensure loom assembly is not pinched, kinked or bent too tightly.
Blockage in nozzle	Power down and unplug backpack. Visually inspect nozzle from outside for blockages. Note: Spray wand assembly, including the nozzle is non-serviceable. If there are problems with obstructions in the wand or nozzle assembly, please contact www.byoplanet.com.
Clogged air filter	Replace air filter. See MAINTENANCE section to access and replace filter.

Leakage is occurring

Potential Cause	Corrective Action
Device is not stored upright	Storage of product or the device on its side can lead to container leaking. Device should be stored in the upright position. When not in use, the device should be stored in a cool, dry place. Container can be removed from the device and capped to store separately.
Container reservoir was not wiped clean after use	Operator should wipe the container reservoir clean after use to remove liquid buildup caused by normal operation. Wiping the container reservoir clean after use avoids excess buildup and potential spills. Always operate and store the device in the upright position. Note that some leakage from the base of the unit is normal. There is an overflow drain between the container cavity and base of the unit.
Harness is not properly secured to operator	Ensure the harness is secured properly and adjusted to the operator. The device should be worn in the upright position and only worn during operation. Any misuse or operation of the device not in the upright position can lead to container leaking.
Liquid line is disconnected	Reconnect the clear liquid line to the dispensing cap. Ensure there is no damage to the liquid line or dispensing cap to avoid leaks and contamination. After reconnecting, the device may need to be primed prior to spraying.
Punctured or damaged container	Disconnect the container from the dispensing cap and remove the container from the reservoir. Inspect container for damage. If damaged, replace with another ByoPlanet® approved product.

EQUIPMENT WARRANTY

THE BYOPACK® ELECTROSTATIC SPRAYER SYSTEM COMES WITH A ONE YEAR WARRANTY. PLEASE REFER TO THE MANUFACTURER'S WARRANTY POLICY FOUND AT WWW.BYOPLANET.COM.

TO PURCHASE
A BYOPLANET
ELECTROSTATIC
SPRAY SYSTEM

BYOPLANET.COM
1-877-220-0550

FOR CUSTOMER
COLLATERAL, INCLUDING
OPERATOR'S MANUAL
AND QUICK START GUIDES

BYOPLANET.COM
1-877-220-0550

FOR DEVICE
WARRANTY
INFORMATION

BYOPLANET.COM
1-877-220-0550

QUESTIONS?
BYOPLANET.COM
1-877-220-0550